



REIMAGINING THE ROSEAU WELLNESS CENTER

PRIMARY AMENITIES

- Indoor Aquatics
- Multi-Purpose Gym
- Wellness Space
- Indoor Playground
- Class/Meeting Rooms
- Walking Track

SITE PLAN



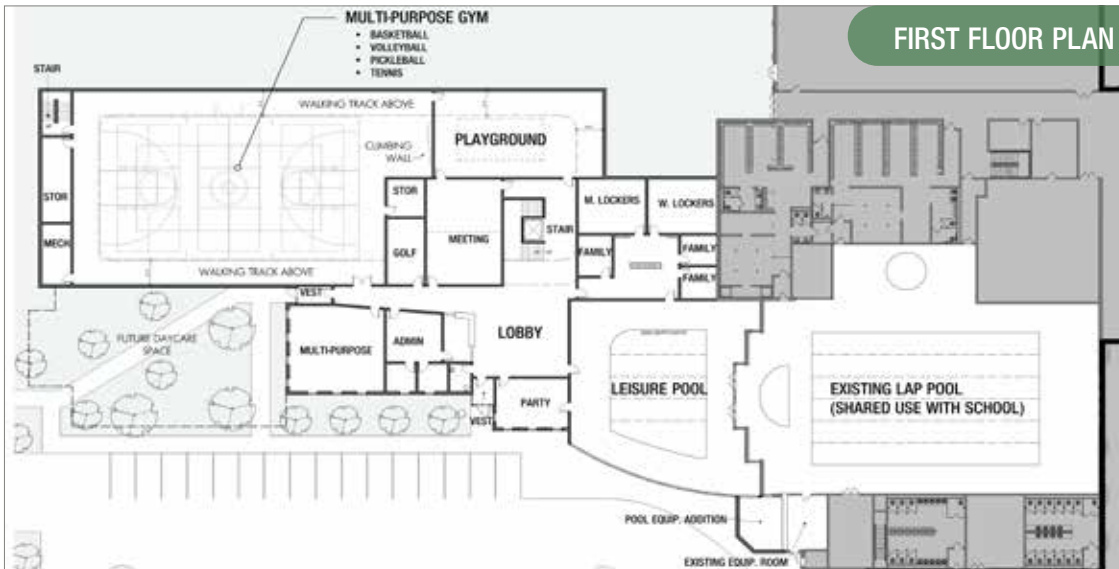
ABOUT THE PROJECT

The Roseau community is seeking to develop a 27,000 SF Indoor Community and Wellness Center to meet the social, health, and recreational needs of the broader Roseau community. Local stakeholders and the professional consulting firm of JLG Architects have been engaged in a community planning process to develop this much-needed project to replace what has been the historic community center, the Roseau Community School. Due to the safety and security needs of the school district, open public access to school facilities is not viable. However, this plan not only restores public access to much needed wellness facilities but also expands them to include other social and recreational facilities like an indoor playground, rock climbing wall, leisure pool, group fitness rooms, classrooms, and multipurpose spaces.

COST INFORMATION

- Total Project Cost: \$15.1M
- State & Federal Grants: \$7.55M
- Local Contribution: \$7.55M*

*Local Sales Tax and/or Private Capital Campaign



Scan to visit the City's website for more info:

