

WAAS CH <b>99404</b> <b>W34A</b>	APP CRS <b>342°</b>	Rwy Idg TDZE Apt Elev	<b>4400</b> <b>1060</b> <b>1060</b>
--	------------------------	-----------------------------	---

# RNAV (GPS) RWY 34

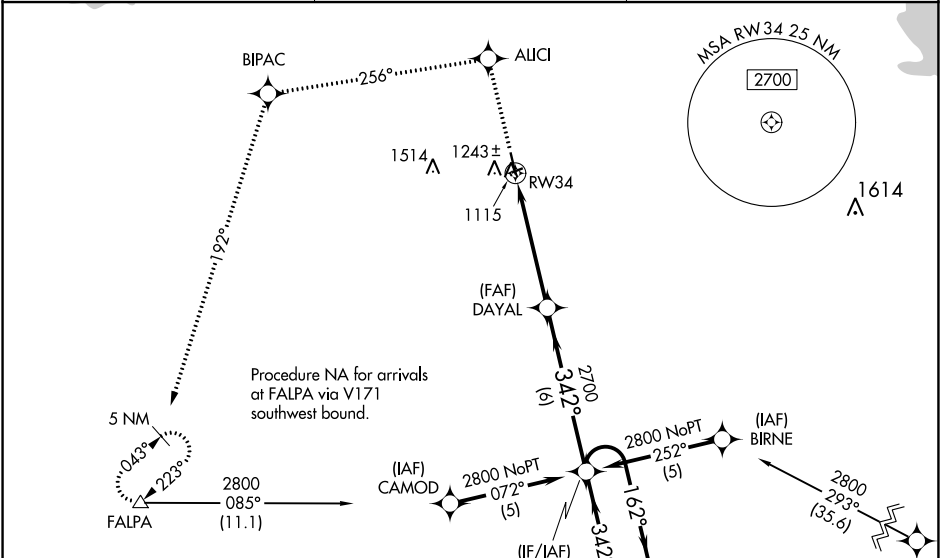
ROSEAU MUNI/RUDY BILLBERG FLD (R.O.X)

RNP APCH-GPS.

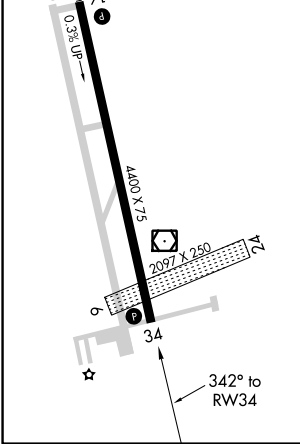
▼ When local altimeter setting not received, use Warroad altimeter setting and increase LPV DA to 1346, LNAV/VNAV DA to 1521, and all MDAs 40 feet; increase LNAV MDA Cat C/D visibility 1/8 SM and Circling Cat C and D visibility 1/4 SM. VDP NA when using Warroad altimeter setting. Baro-VNAV NA when using Warroad altimeter setting. For uncompensated Baro-VNAV systems, LNAV/VNAV NA below -17°C (2°F) or above 46°C (114°F). Visibility reduction by helicopters NA.

MISSED APPROACH: Climb to 2900 direct ALCI and via 256° track to BIPAC and 192° track to FALPA and hold.

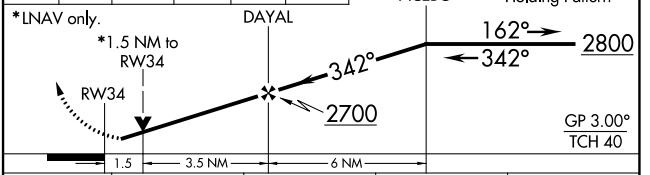
AWOS-3 <b>118.075</b>	MINNEAPOLIS CENTER <b>134.75 251.1</b>	UNICOM <b>122.8</b> (CTAF) <b>0</b>
--------------------------	---	--



ELEV 1060	TDZE 1060
MIRL Rwy 16-34 <b>1</b>	
REIL Rws 16 and 34 <b>1*</b>	



2900	ALCI	256° tr	BIPAC	192° tr	FALPA	VGSI and RNAV glidepath not coincident (VGSI Angle 3.00°/TCH 44).	5 NM Holding Pattern
------	------	---------	-------	---------	-------	---	----------------------



CATEGORY	A	B	C	D
LPV DA	1310-1		250 (300-1)	
LNAV/VNAV DA	1485-1½		425 (500-1½)	
LNAV MDA	1560-1	500 (500-1)	1560-1⅓	500 (500-1⅓)
CIRCLING	1600-1	540 (600-1)	1840-2¼ 780 (800-2¼)	1840-2½ 780 (800-2½)

NC-1, 08 SEP 2022 to 06 OCT 2022

NC-1, 08 SEP 2022 to 06 OCT 2022