

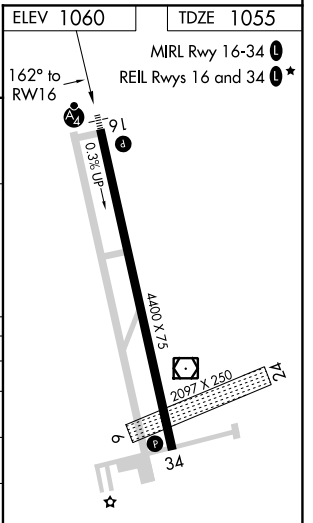
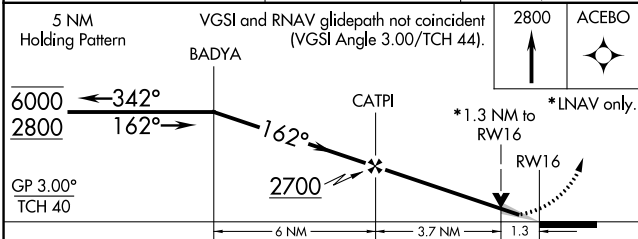
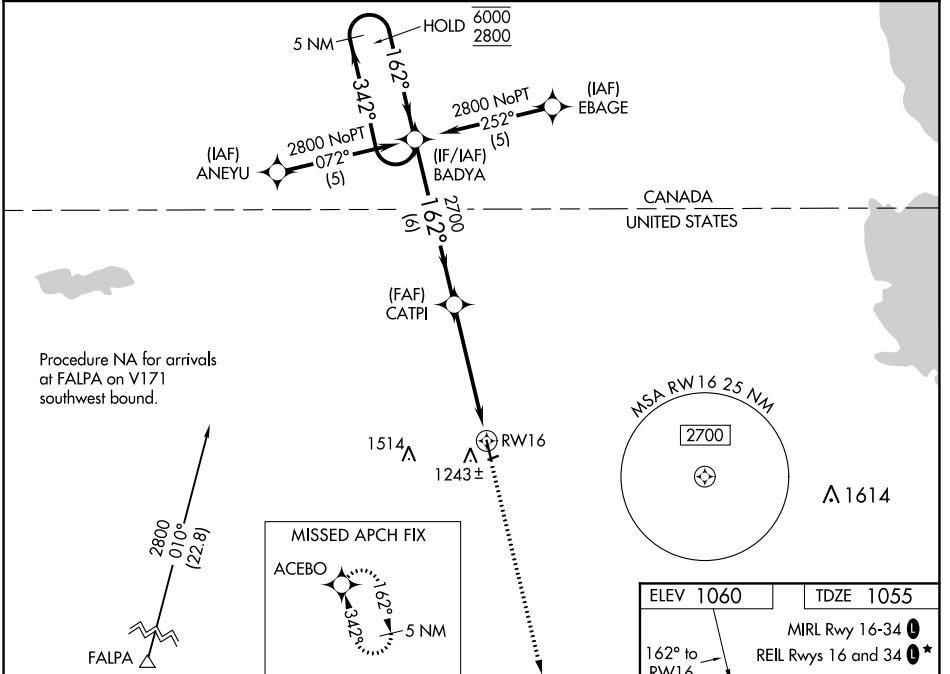
WAAS CH 56304 W16A	APP CRS 162°	Rwy Idg TDZE Apt Elev	4400 1055 1060
--	------------------------	-----------------------------	---

RNAV (GPS) RWY 16

ROSEAU MUNI/RUDY BILLBERG FLD (R.O.X)

RNP APCH. <p>▼ Circling NA to Rwy's 6 and 24. Baro-VNAV and VDP NA when using Warroad altimeter setting. For uncompensated Baro-VNAV systems, LNAV/VNAV NA below -17°C or above 46°C. When local altimeter setting not received, use Warroad altimeter setting and increase all MDAs 40 feet, increase Circling Cat C and D visibility ¼ SM.</p>	MALSF 	MISSED APPROACH: Climb to 2800 direct ACEBO and hold.
---	-----------	---

AWOS-3 118.075	MINNEAPOLIS CENTER 134.75 251.1	UNICOM 122.8 (CTAF)
--------------------------	---	-------------------------------



CATEGORY	A	B	C	D
LPV DA		1305-1	250 (300-1)	
LNAV/VNAV DA		1403-1½	348 (400-1½)	
LNAV MDA	1500-1	445 (500-1)	1500-1¼ 445 (500-1¼)	1500-1½ 445 (500-1½)
CIRCLING	1600-1	540 (600-1)	1840-2¼ 780 (800-2¼)	1840-2½ 780 (800-2½)

NC-1, 08 SEP 2022 to 06 OCT 2022

NC-1, 08 SEP 2022 to 06 OCT 2022