

Roseau, Minnesota

Your Business Partner



Roseau and Roseau County are home to two worldwide industrial leaders: Polaris Industries, Inc. and Marvin Windows & Doors.

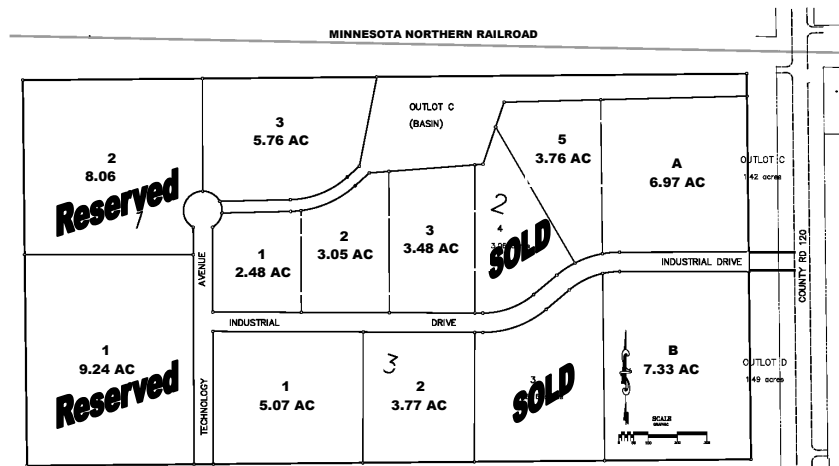
These homegrown industrial giants speak to the pro-business climate of this region. Roseau County is a low-cost, non-union, rural setting that provides low cost and reliable utilities, communications transportation, and labor-force.

It's no wonder that Roseau County is home to the 2nd and 5th largest manufacturing facilities in Minnesota.

**ROSEAU EDA
CITY OF ROSEAU
MINNESOTA**

121 Center Street East
Suite 101; P.O. Box 307
Roseau, MN 56751

Todd Peterson, Administrator
Phone: 218-463-5003
Fax: 218-463-1252
Email: tpetersn@mncable.net



The Roseau EDA is pleased to announce the completion of the new 80-acre Roseau Industrial Park. Located on the west side of Roseau this park offers up to 13 sites of various sizes. Each lot is provided with utility services. These lots are offered at extremely low cost averaging between \$4,000-\$7,500 per acre with no special assessments for services. Lot prices are negotiable based on the size of the lot and the development proposal. For more information contact the Roseau EDA.

The Roseau EDA has partnered with the State of Minnesota to make the Roseau Industrial Park a JOBZ site. This designation provides tax free development to qualified industry located in the park. Qualifying businesses are eligible for property, sales and State income tax exemptions for up to the duration of the JOBZ program (10 years as of January 2006). For more information on the State of Minnesota JOBZ program and a JOBZ tax savings calculator visit the Minnesota DEED website at www.deed.state.mn.us/bizdev/jobz.htm.